



Project Story: Josephine Lake Butterflyway

Cindyl Arnold

What is a Butterflyway?

The Butterflyway Project is a volunteer-led movement growing highways of habitat for bees and butterflies across Canada.

Butterflyways make communities greener and healthier.

The goal is to grow plants native to the riparian area around Josephine lake that will attract and support local pollinators over multiple seasons.

Step One

Identify which species of butterflies are in the area and then identify host plants and nectar plants they need. The Bowen Island Wetland inventory was used to research plants native to Josephine lake that also serve as host and nectar plants to the range of pollinators/butterflies specific to our area:

<https://bowenislandconservancy.org/files/2002-Bowen%20Island%20Wetland%20Report.pdf>

Carla Skuce, Manager of Environment and Parks Planning for BIM was kind enough to mentor, advising on ideal plants and balancing responsibilities when dealing with riparian land restrictions.

Local Butterfly Species:

- Painted Lady
- Western Tiger Swallowtail
- Pale Swallowtail
- Lorquins Admiral





**Neighbourhood
Small Grants
Bowen Island**



PALE SWALLOWTAIL - *PAPILIO EURYMEDON*

LAST OBSERVED - 2019 between May to late July: District of North Vancouver - Butterflyway Lane on Bournemouth Crescent, Greater Vancouver, Fraser Valley, Skagit Valley, Hope, Yale, Nelson, Manning Park Kelowna, Okanagan - Similkameen, Lantzville, Columbia - Shaswap, Central Kootenay, Kitimat - Stikine, Straight of Georgia, Squamish, Lost Lake Park Whistler, Pemberton, Mayne Island, Comox Valley, Cowichan Valley, Sechelt, Halfmoon Bay, Gibsons, Salt Spring Island, Sechelt, Victoria, Nanaimo, Colwood, Saanich, Powell River, **Bowen Island**.

IN FLIGHT - June and July in Southern British Columbia.

HABITAT - Pale Tiger Swallowtails are univoltine in British Columbia. They hibernate on Vancouver Island. Males are often seen mud-puddling. Pale Tiger Swallowtail are seen throughout southern BC in low and mid-elevation forest openings and riparian habitats.

HOST PLANTS - Bitter cherry, willow, poplar, red alder, ocean spray and ceanothus (California lilac).

NECTAR PLANTS - Bee balm, butterfly weed, parsley, thistle, joe pye weed, sedum, butterfly bushes and sunflower.

Source: <https://davidsuzuki.org/wp-content/uploads/2020/05/DSF-8-Butterfly-illustrations-Lower-Mainland.pdf>

Step Two

Source seeds and plants. Supporting local business, we teamed up with the Bowen Island Flower Shop. They generously provided knowledge, support and a discounted rate on seeds/plants.

Step Three

The neighbourhood was canvassed and neighbours were invited to participate.

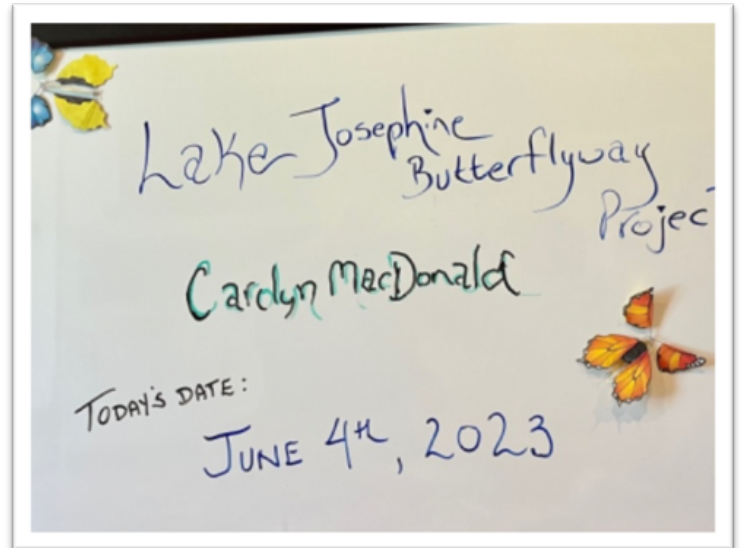


**BOWEN ISLAND
COMMUNITY
FOUNDATION**

IN PARTNERSHIP WITH
vancouver
foundation



**Neighbourhood
Small Grants
Bowen Island**



Carolyn and Tim were relatively new to Bowen Island, having moved from Ontario. This project introduced us.



Plant progress reports were shared.

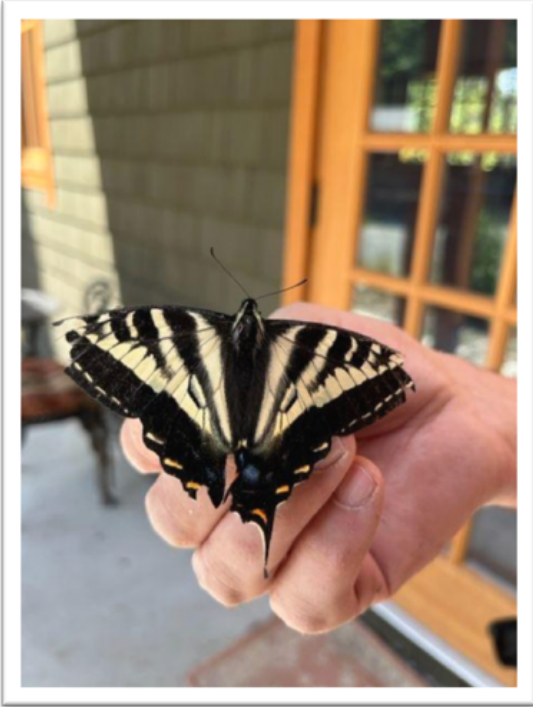


**BOWEN ISLAND
COMMUNITY
FOUNDATION**

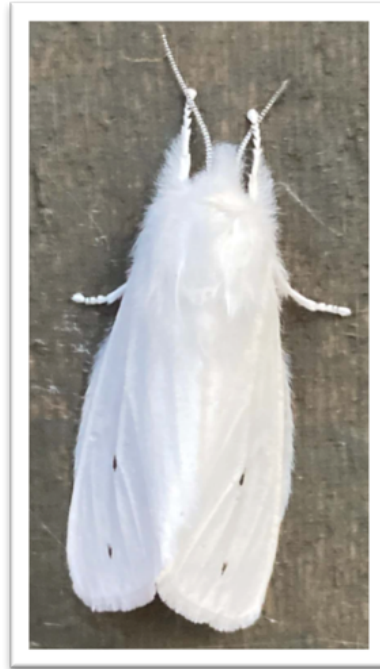
IN PARTNERSHIP WITH
vancouver
foundation



**Neighbourhood
Small Grants
Bowen Island**



Targeted
pollinators were
spotted!
Western Tiger
Swallowtail



...as well as non
targeted ones.
Tiger Moth

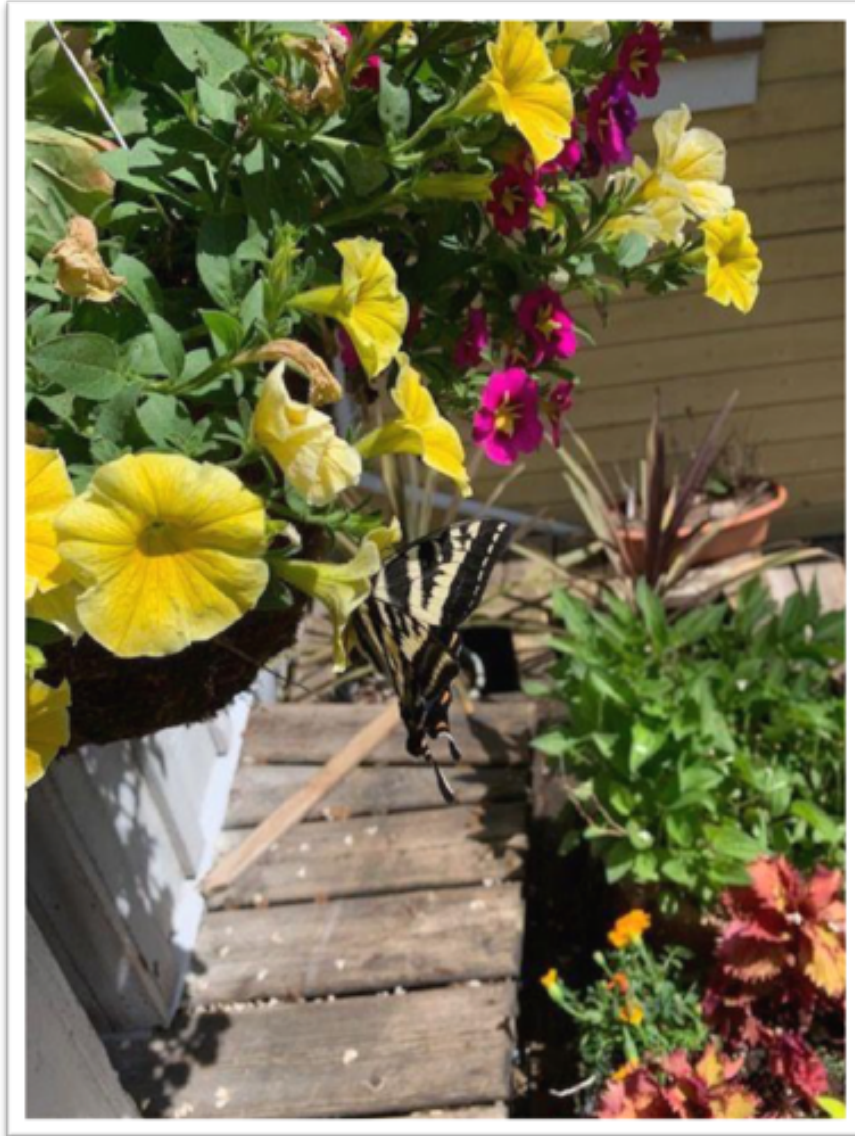


More pollinators from the Lake Josephine Butterflyway





Neighbourhood
Small Grants
Bowen Island



Benefits of Butterflyways...

- Establish important habitat patches for butterflies and local bees.
- Create learning opportunities for students and the local community.
- Help people connect with nature and one another.



**BOWEN ISLAND
COMMUNITY
FOUNDATION**

IN PARTNERSHIP WITH
vancoover
foundation



**Neighbourhood
Small Grants
Bowen Island**



How it started...

How it went...



**BOWEN ISLAND
COMMUNITY
FOUNDATION**

IN PARTNERSHIP WITH
vancoover
foundation



Wildflower Bouquets

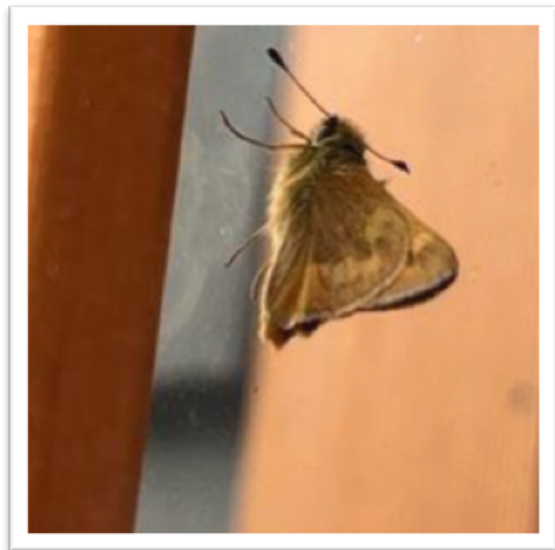
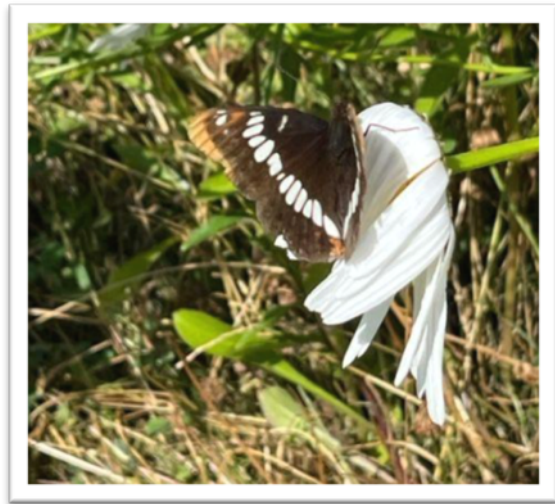
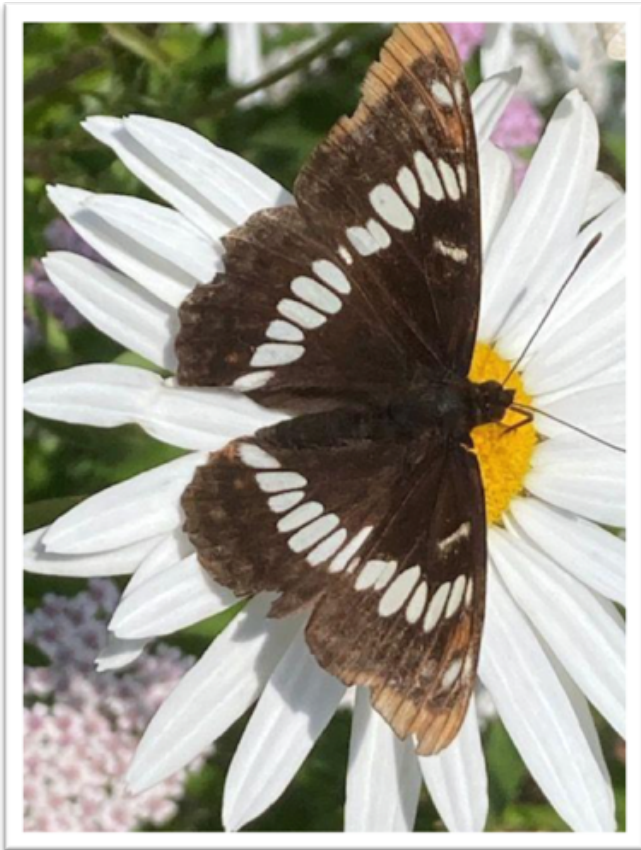




Neighbourhood
Small Grants
Bowen Island

A big thank you to all the Lake Josephine Butterflyway participants, with an extra special thanks to:

- Carolyn MacDonald & Tim King
- Phil Calder
- The Bowen Flower Shop



BOWEN ISLAND
COMMUNITY
FOUNDATION

IN PARTNERSHIP WITH
vancouver
foundation